

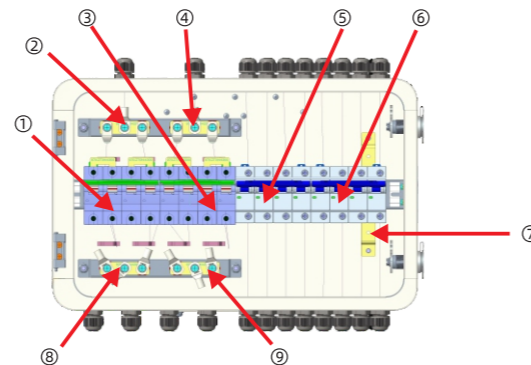


AC-DB-50KTL User Manual

SHENZHEN ATESS POWER TECHNOLOGY CO.,LTD

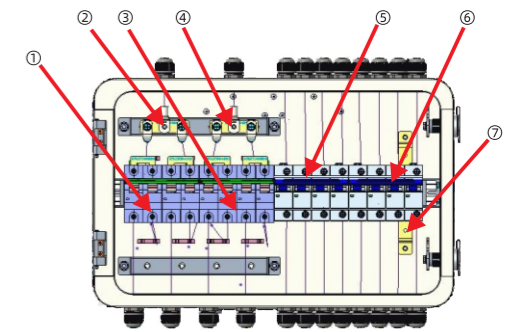
Internal Components

There are four miniature circuit breakers inside, with two 1000VDC/100A miniature DC circuit breakers on the left side used to connect the battery cabinet, two 400Vac/125A miniature AC circuit breakers on the right side, the rightmost miniature circuit breaker connected to the power grid port of HPS, and the second AC miniature circuit breaker connected to the load port of HPS on the right side. The internal components, as well as the top and bottom schematic diagram are as follows



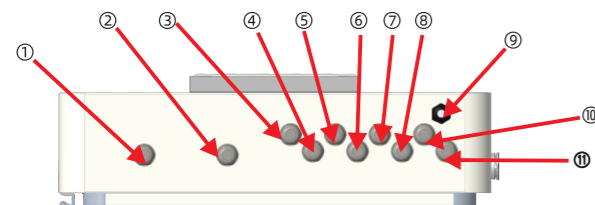
FRONT VIEW 1

Number	Name	NUM
1	DC breaker-1	1
2	Positive copper strip	1
3	DC breaker-2	1
4	Negative pole copper strip	1
5	Load switch	1
6	Grid switch	1
7	PE copper strip	1
8	BAT+ copper strip	1
9	BAT- copper strip	1



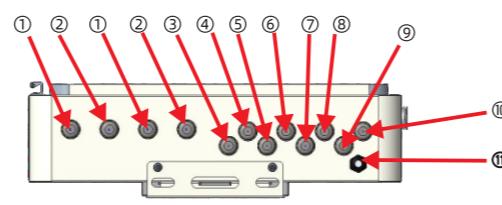
FRONT VIEW 2

Number	Name	NUM
1	DC breaker-1	1
2	Positive copper strip	1
3	DC breaker-2	1
4	Negative pole copper strip	1
5	Load switch	1
6	Grid switch	1
7	PE copper strip	1



TOP VIEW

Number	Name	NUM
1	HPS-BAT+	1
2	HPS-BAT-	1
3	LOAD-A	1
4	LOAD-B	1
5	LOAD-C	1
6	LOAD-N	1
7	GIRD-L1	1
8	GIRD-L2	1
9	PE	1
10	GIRD-L3	1
11	GIRD-N	1



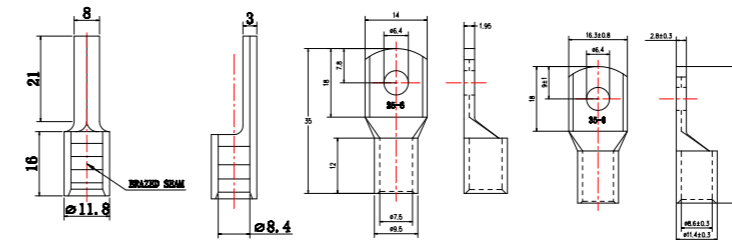
BOTTOM VIEW

Number	Name	NUM
1	BAT+	2
2	BAT-	2
3	LOAD-A	1
4	LOAD-B	1
5	LOAD-C	1
6	LOAD-N	1
7	GIRD-L1	1
8	GIRD-L2	1
9	GIRD-L3	1
10	GIRD-N	1
11	PE	1

Wiring precautions

1. Whether it is the DC battery part, the AC power grid, or the AC load, we recommend using 35 square or 2 AGW copper wires. When selecting wires, attention should be paid to the insulation voltage level of the wires. For the DC battery part, it is recommended to use wires with an insulation voltage level of 1000VDC, and for the AC part, it is recommended to use wires with an insulation voltage not less than 400Vac.

2. Before wiring, it is necessary to select suitable wiring terminals. It is recommended to choose two types, as shown in Figure 2 below



unit: mm

3. The wiring is sequential; Firstly, peel the wire, with a recommended peeling length of 15mm, as shown in Figure 3; Secondly, the wire passes through the PG head of ATESS AC-DB-50KTL, as shown in Figure 4; Crimp the terminal onto the wire again, and finally connect the corresponding wire to the corresponding miniature circuit breaker.

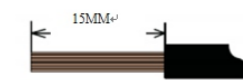


Figure 3

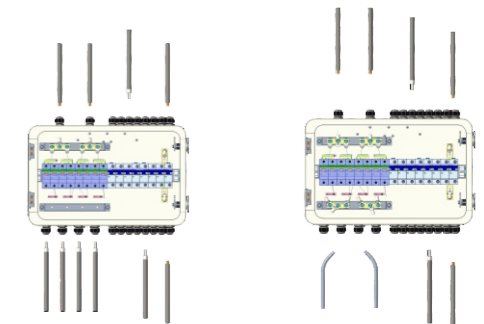
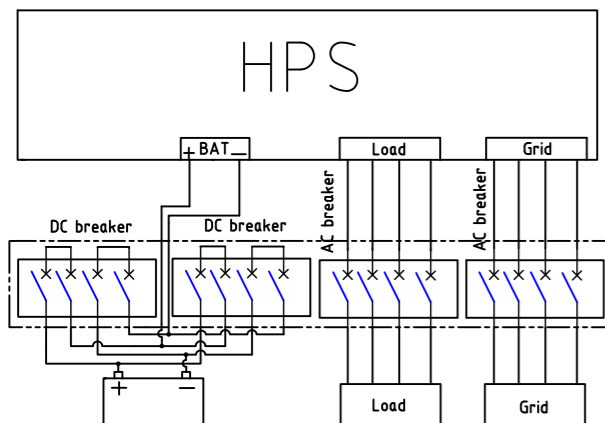


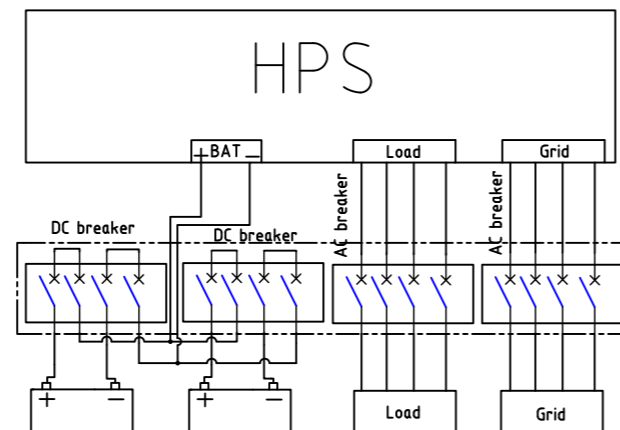
Figure 4

Wiring Electrical Schematic Diagram

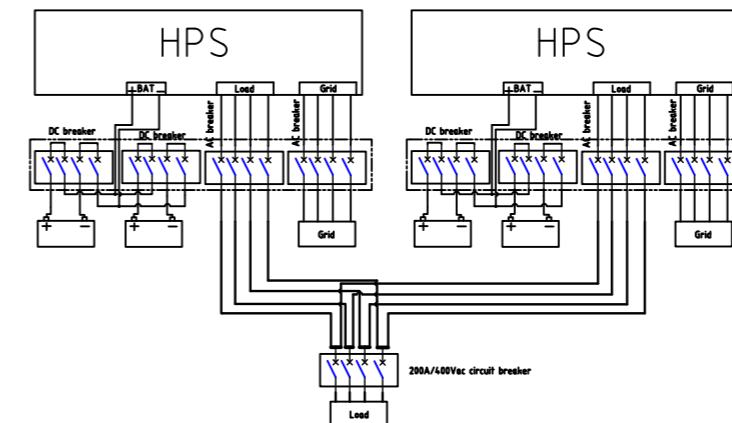
1. Wiring diagram for individual battery pack, ATESS AC-DB-50KTL, and HPS



2. Two battery packs and ATESS AC-DB-50KTL and HPS wiring diagram



3. Electrical schematic diagram of two HPS parallel wiring



Maintenance

Please communicate with the business regarding the warranty period, but there are several situations that do not fall within the warranty scope

- a. Intentionally causing damage
- b. Unable to resist natural disasters
- c. Damage caused by improper use

All interpretation rights ultimately belong to SHENZHEN ATESS POWER TECHNOLOGY CO.,LTD