



DC-DB-50KTL

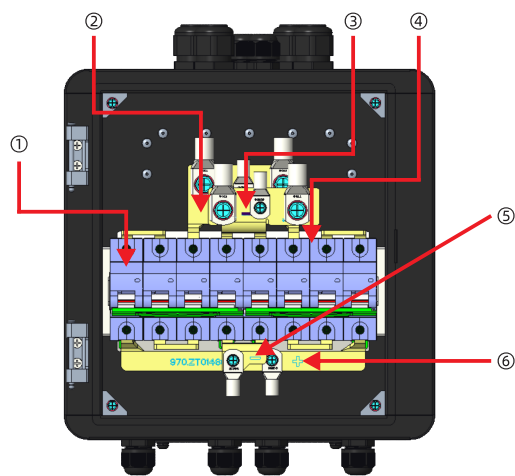
User Manual



SHENZHEN ATESS POWER TECHNOLOGY CO.,LTD

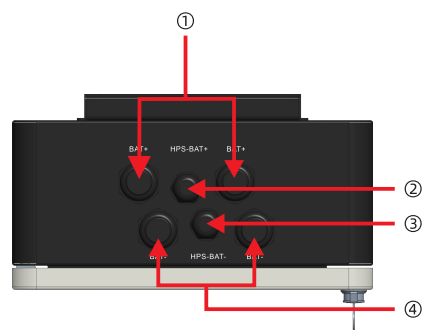
Internal Components

There are two 1000VDC/100A miniature DC circuit breakers inside the DC distribution box for connecting the battery cabinet. The schematic diagrams of the internal components from different angles are shown below.



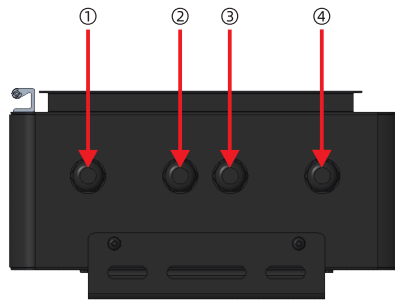
FRONT VIEW 1

NO	NAME	NUM
1	DC breaker-1	1
2	Positive copper strip	1
3	Negative copper strip	1
4	DC breaker-2	1
5	BAT- copper strip	1
6	BAT+ copper strip	1



TOP VIEW

NO	NAME	NUM
1	BAT+ interface	2
2	HPS-BAT+ interface	1
3	HPS-BAT- interface	1
4	BAT- interface	2

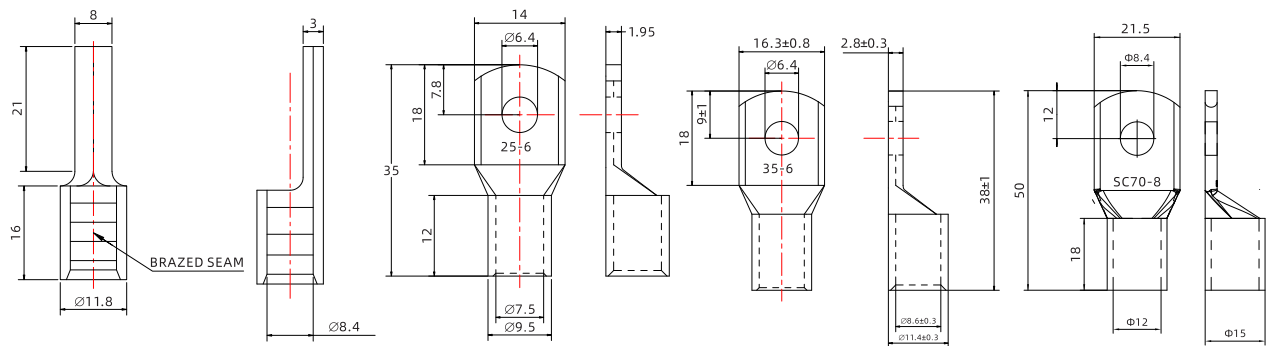


BOTTOM VIEW

NO	NAME	NUM
1	BAT+ ( - )	1
2	BAT- ( + )	1
3	BAT+ ( - )	1
4	BAT- ( + )	1

## Wiring instructions

1. For DC battery wiring, it is recommended to use 35 AWG or 2 AWG square copper wires. Ensure that the wire insulation has a voltage rating of at least 1000VDC
2. Before wiring, it is important to select appropriate wiring terminals. Two recommended types are shown in Figure 2 below.



unit: mm

3. The wiring is sequential;

First, peel the wire, with a recommended peeling length of 15mm, as shown in Figure 3;

Second, the wire passes through the PG head of ATESS DC-DB-50KTL, as shown in Figure 4;

Third, Crimp the terminal onto the wire, and connect the corresponding wire to the corresponding miniature circuit breaker.

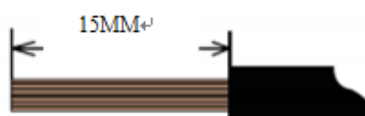


Figure 3

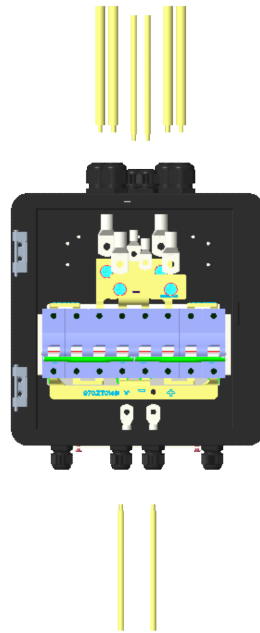
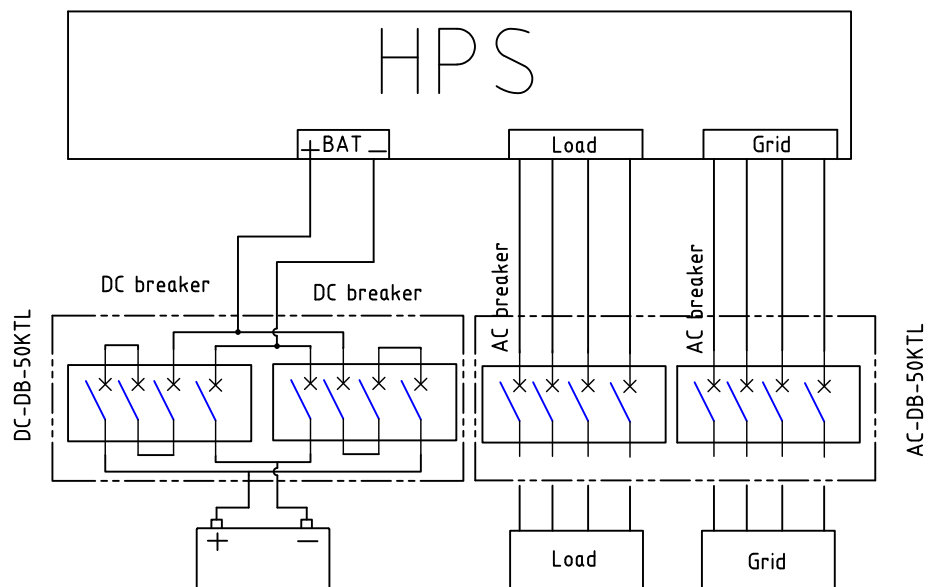


Figure 4

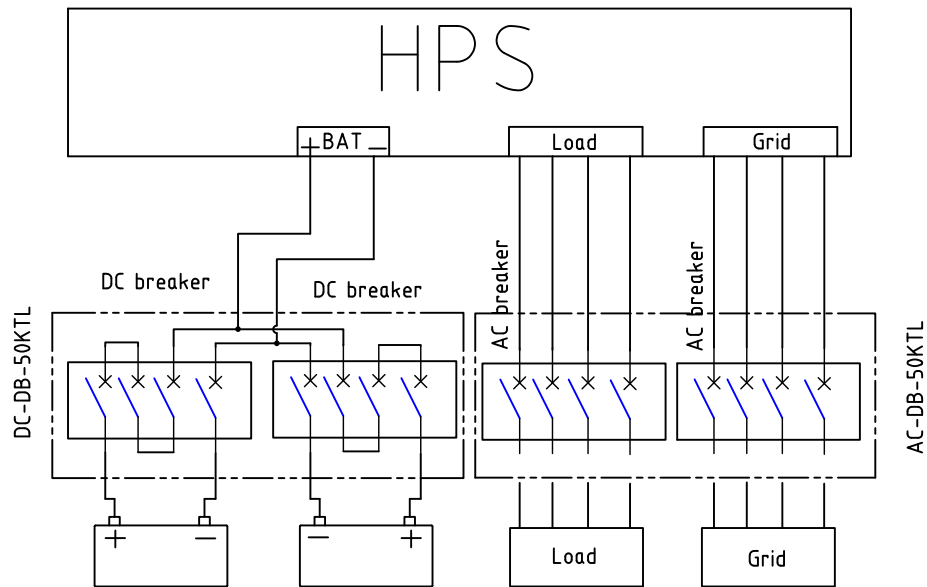
## Wiring Electrical Schematic Diagram

1.Wiring diagram for individual battery pack, ATESS DC-DB-50KTL ,ATESS AC-DB-50KTL, and HPS

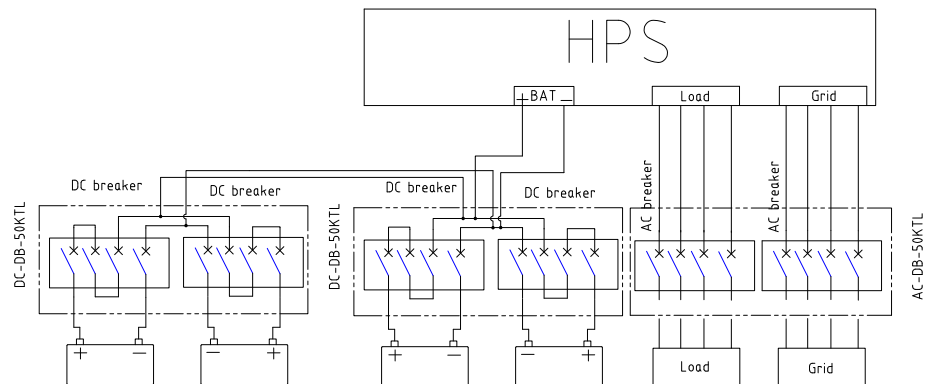




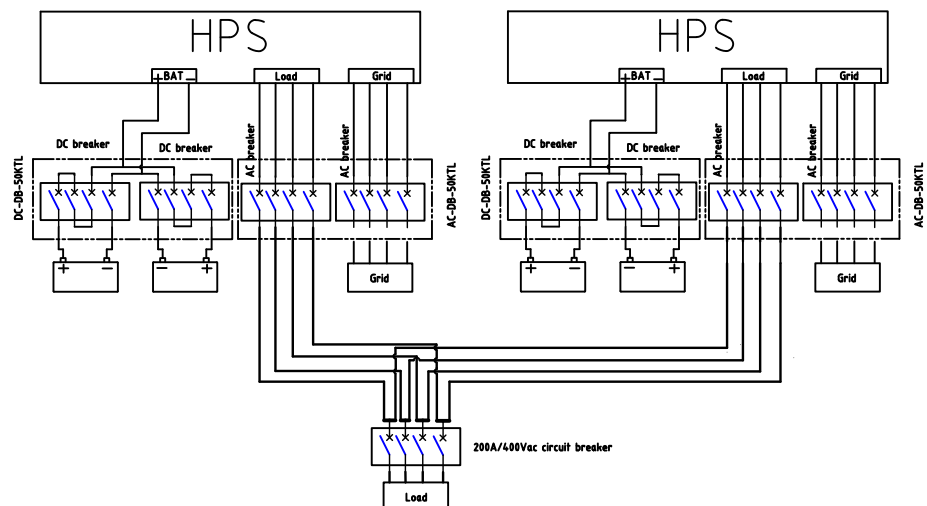
## 2 .Two battery packs and ATESS DC-DB-50KTL,ATESS AC-DB-50KTL and HPS wiring diagram



## 3. Wiring diagram for four sets of batteries in parallel (when inverters are paralleled and share a common DC bus, the number of inverters must be limited to 3 units to ensure the system operates safely and stably).



## 4. Electrical schematic diagram of two HPS parallel wiring



## Maintenance

Please communicate with the business regarding the warranty period, but there are several situations that do not fall within the warranty scope

- a. Intentionally causing damage
- b. Unable to resist natural disasters
- c. Damage caused by improper use

All interpretation rights ultimately belong to SHENZHEN ATESS POWER TECHNOLOGY CO.,LTD