



DC-DB-50KTL

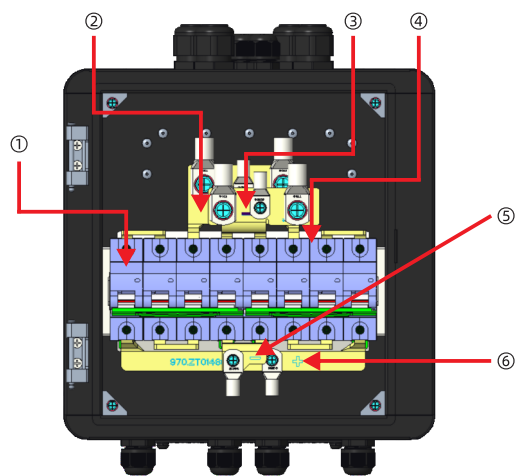
User Manual



SHENZHEN ATESS POWER TECHNOLOGY CO.,LTD

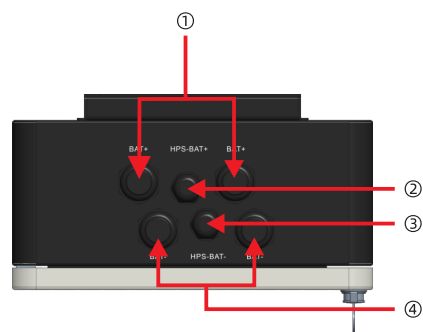
Internal Components

There are two 1000VDC/100A miniature DC circuit breakers inside the DC distribution box for connecting the battery cabinet. The schematic diagrams of the internal components from different angles are shown below.



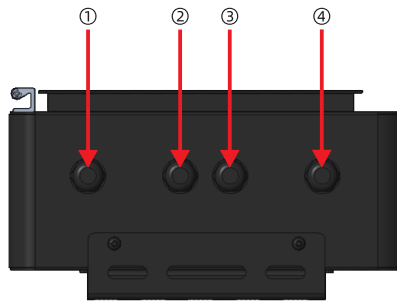
FRONT VIEW 1

NO	NAME	NUM
1	DC breaker-1	1
2	Positive copper strip	1
3	Negative copper strip	1
4	DC breaker-2	1
5	BAT- copper strip	1
6	BAT+ copper strip	1



TOP VIEW

NO	NAME	NUM
1	BAT+ interface	2
2	HPS-BAT+ interface	1
3	HPS-BAT- interface	1
4	BAT- interface	2

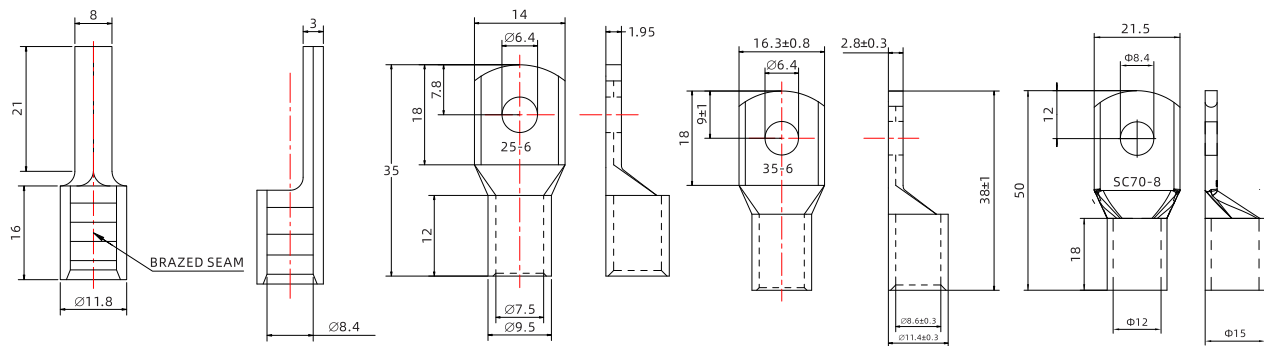


BOTTOM VIEW

NO	NAME	NUM
1	BAT+ (-)	1
2	BAT- (+)	1
3	BAT+ (-)	1
4	BAT- (+)	1

Wiring instructions

- For DC battery wiring, it is recommended to use 35 AWG or 2 AWG square copper wires. Ensure that the wire insulation has a voltage rating of at least 1000VDC. When the switch boxes are connected in parallel, it is recommended to use 50mm²-70mm² cables or American standard 1/0-2/0 cables for the connection between the switch boxes.
- Before wiring, it is important to select appropriate wiring terminals. Two recommended types are shown in Figure 2 below.



unit: mm

- The wiring is sequential;

First, peel the wire, with a recommended peeling length of 15mm, as shown in Figure 3;

Second, the wire passes through the PG head of ATESS DC-DB-50KTL, as shown in Figure 4;

Third, Crimp the terminal onto the wire, and connect the corresponding wire to the corresponding miniature circuit breaker.

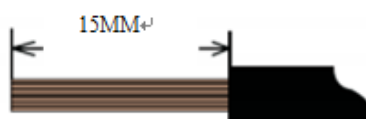


Figure 3

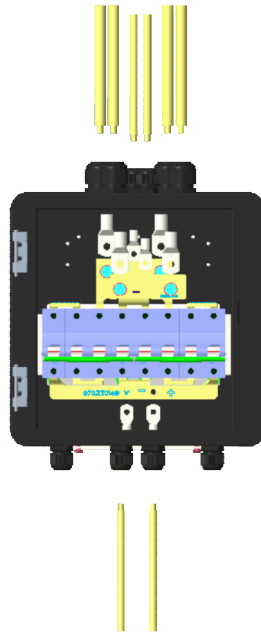
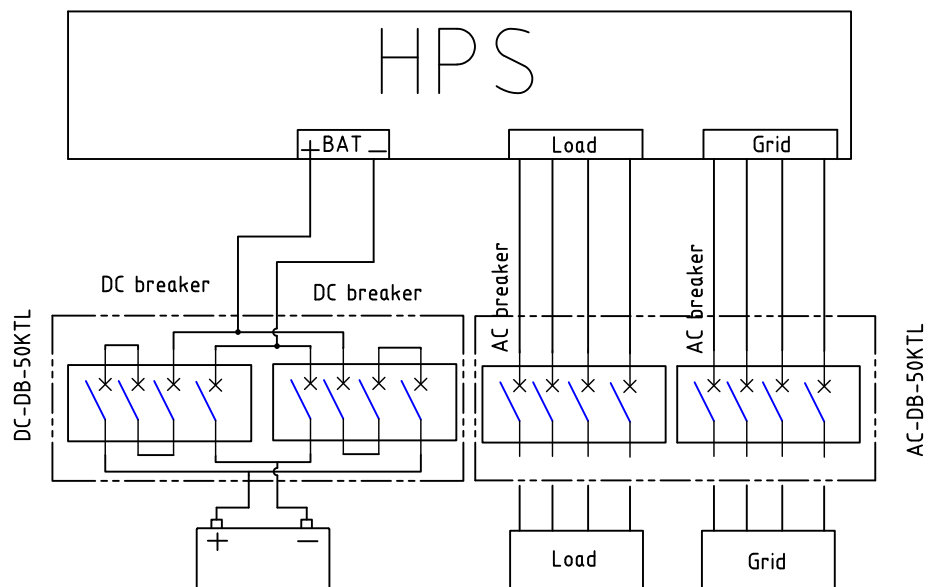


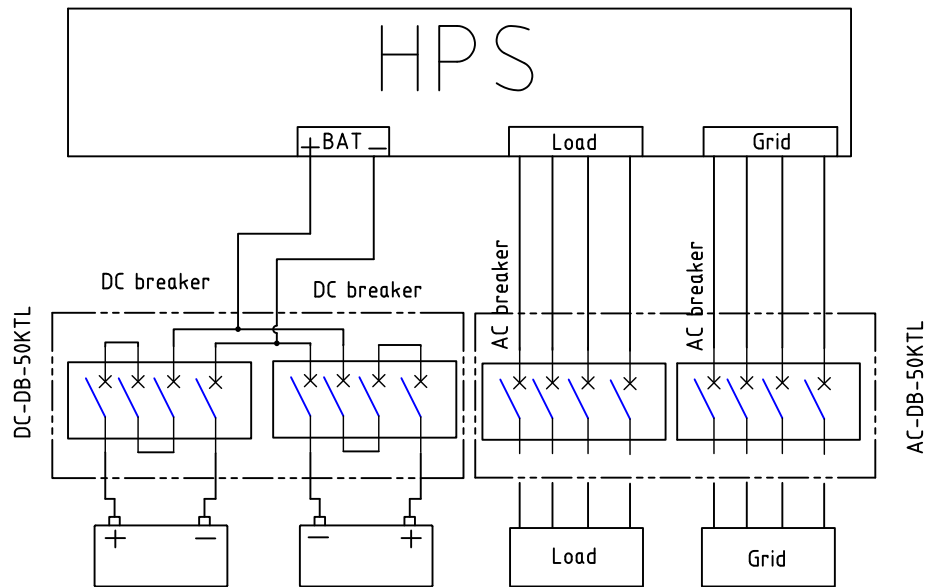
Figure 4

Wiring Electrical Schematic Diagram

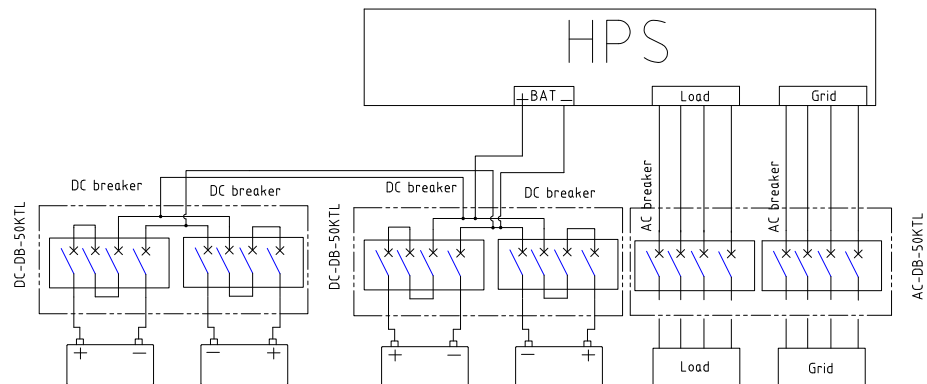
1.Wiring diagram for individual battery pack, ATESS DC-DB-50KTL ,ATESS AC-DB-50KTL, and HPS



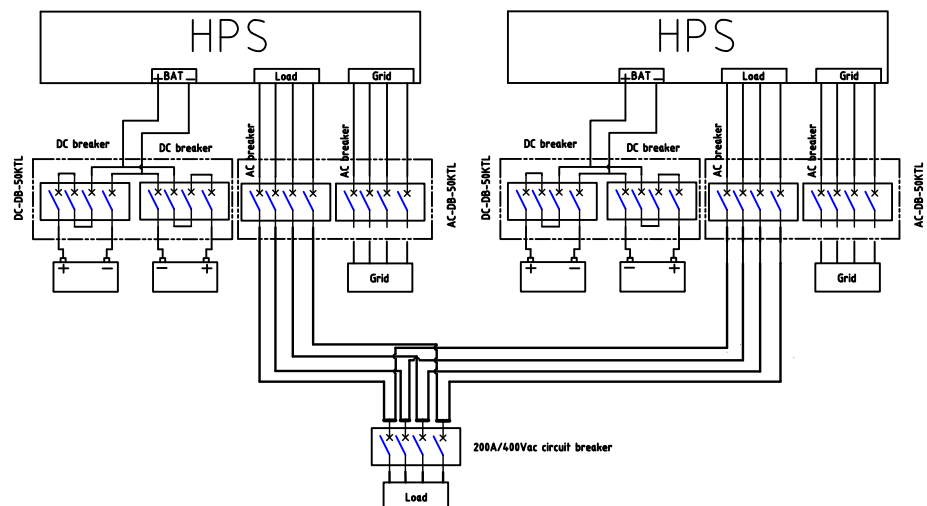
2. Two battery packs and ATESS DC-DB-50KTL, ATESS AC-DB-50KTL and HPS wiring diagram



3. Wiring diagram for four sets of batteries in parallel (when inverters are paralleled and share a common DC bus, the number of inverters must be limited to 3 units to ensure the system operates safely and stably).



4. Electrical schematic diagram of two HPS parallel wiring



Maintenance

Please communicate with the business regarding the warranty period, but there are several situations that do not fall within the warranty scope

- a. Intentionally causing damage
- b. Unable to resist natural disasters
- c. Damage caused by improper use

All interpretation rights ultimately belong to SHENZHEN ATESS POWER TECHNOLOGY CO.,LTD